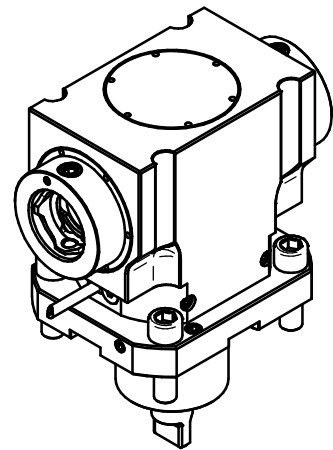
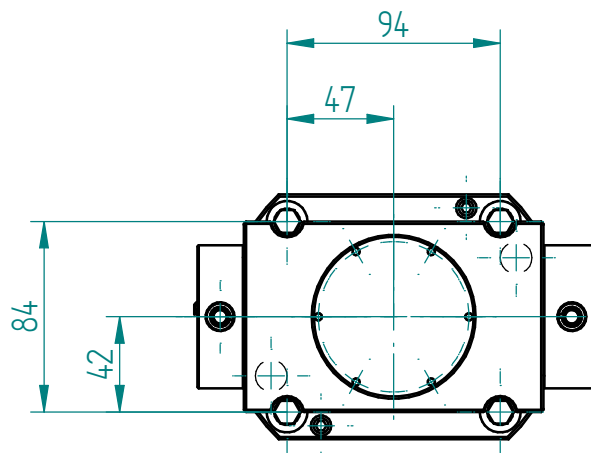
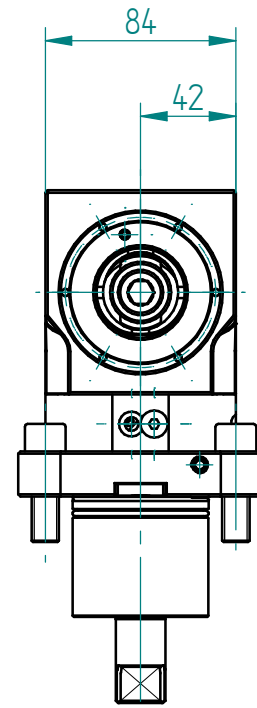
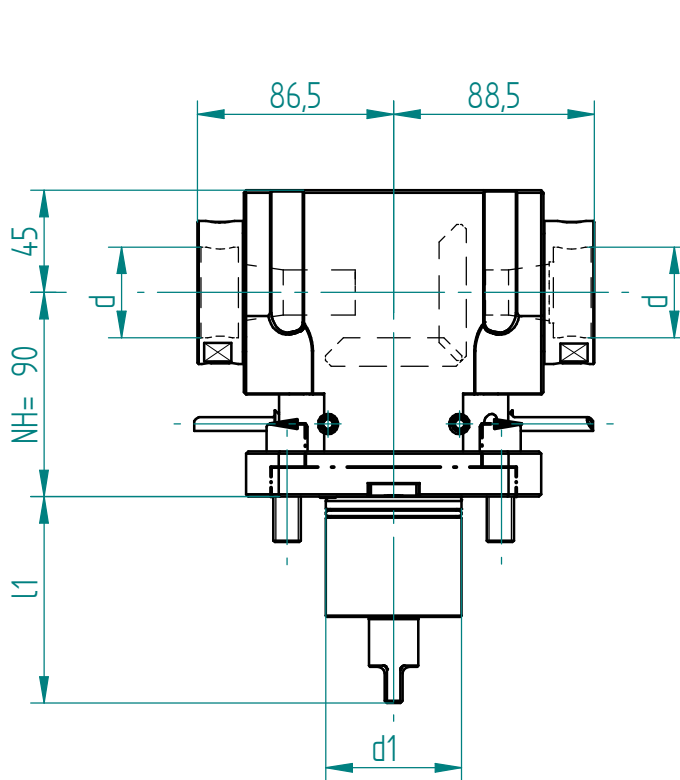


ext. 80 bar



Änderungen vorbehalten. Subject to modification

| Schnittstelle Revolver<br><i>interface tool turret</i> |                             | Drehmoment<br><i>torque</i> | Drehzahl<br><i>tool speed</i> | Leistung<br><i>output</i> | Übersetzung<br><i>gear ratio</i> | Wkzg.Aufnahme<br>Spannbereich<br><i>tool holding fixture<br/>clamping range</i> | Ausführung<br><i>version</i> | Bestell-Nr.<br><i>order N°</i> |        |
|--|-----------------------------|-----------------------------|-------------------------------|---------------------------|----------------------------------|---|------------------------------|--------------------------------|--------|
| Schaft<br><i>shank</i>                                 | Kupplung<br><i>coupling</i> |                             |                               |                           |                                  |   |                              |                                |        |
| d1<br>mm   | l1<br>mm                    | M2 max<br>Nm                | n2 max<br>1/min               | P max<br>KW               | i = n1: n2                       | Spannbereich d<br><i>chucking capacity d</i>                                    |                              |                                |        |
| 60   | 91.0                        | BMT<br>Mori Seiki 60        | 100.0                         | 6000                      | 5.5                              | 1.00  | Solidfix S4                  | universal<br>universal         | 137920 |

Erforderliche(r) Schlüssel zur Werkzeugspannung / *necessary key(s) for tool clamping*

Inbusschlüssel / *Allen head wrench*

