

Końcówki ściągające

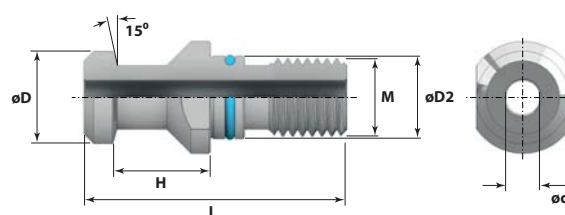
Pull Studs

Anzugsbolzen

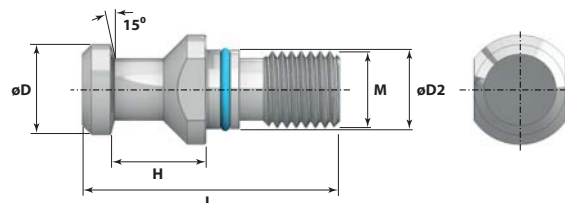
Штривель



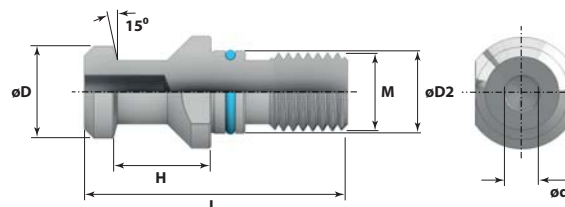
DIN 69872 A (WITH O-RING AND COOLANT BORE)									
Kod produktu Order No. Bestell=Nr. Код товара	Stożek Holder (7.24)	M	ø D (mm)	H (±0.05 mm)	ø D2 (mm)	L (mm)	ø d (mm)	O-Ring	Otwór Coolant Bore
PS.DIN30.L44.B	30	M12	13	19	13	44	2,5		✓
PS.DIN40.L54.OB	40	M16	19	20	17	54	7	✓	✓
PS.DIN50.L74.OB	50	M24	28	25	25	74	11,5	✓	✓



DIN 69872 A (WITH O-RING AND WITHOUT COOLANT BORE)									
Kod produktu Order No. Bestell=Nr. Код товара	Stożek Holder (7.24)	M	ø D (mm)	H (±0.05 mm)	ø D2 (mm)	L (mm)	ø d (mm)	O-Ring	Otwór Coolant Bore
PS.DIN30.L44	30	M12	13	19	13	44	-		
PS.DIN40.L54.O	40	M16	19	20	17	54	-	✓	
PS.DIN50.L74.O	50	M24	28	25	25	74	-	✓	



DIN 69872 B (WITH O-RING AND HALF COOLANT BORE)									
Kod produktu Order No. Bestell=Nr. Код товара	Stożek Holder (7.24)	M	ø D (mm)	H (±0.05 mm)	ø D2 (mm)	L (mm)	ø d (mm)	O-Ring	Otwór Coolant Bore
PS.DIN40.L54.OHB	40	M16	19	20	17	54	7	✓	✓
PS.DIN50.L74.OHB	50	M24	28	25	25	74	11,5	✓	✓



DIN 69872 A (WITH DOUBLE O-RING AND COOLANT BORE)									
Kod produktu Order No. Bestell=Nr. Код товара	Stożek Holder (7.24)	M	ø D (mm)	H (±0.05 mm)	ø D2 (mm)	L (mm)	ø d (mm)	O-Ring	Otwór Coolant Bore
PS.DIN40.L54.ODB	40	M16	19	20	17	54	7	✓/✓	✓
PS.DIN40.L54H.ODB	40	M16	19	23	17	54	7	✓/✓	✓
PS.DIN50.L74.ODB	50	M24	28	25	25	74	7	✓/✓	✓

